

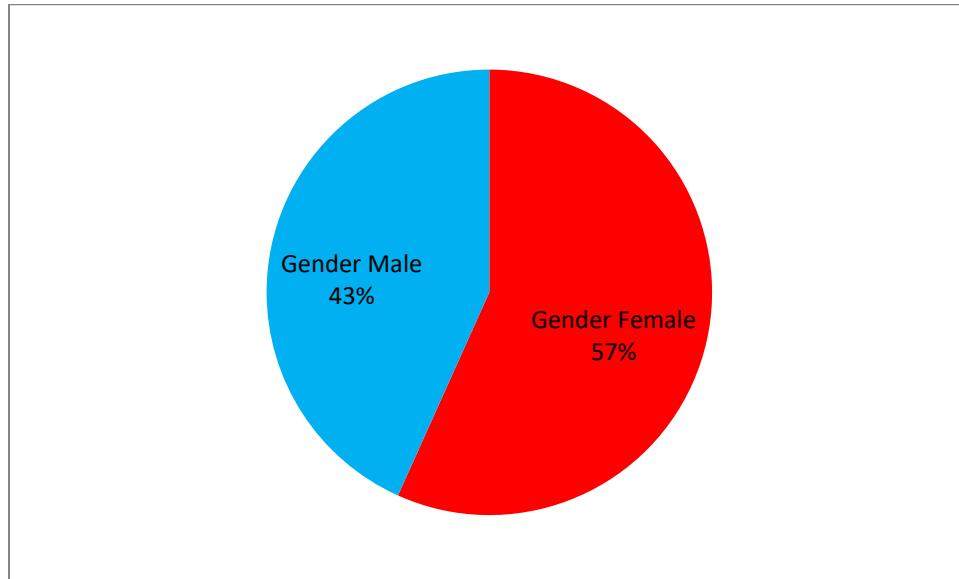
# RAYALASEEMA UNIVERSITY

(A State University, Accredited with "B" Grade by NAAC)  
KURNOOL – 518 002 (A.P)

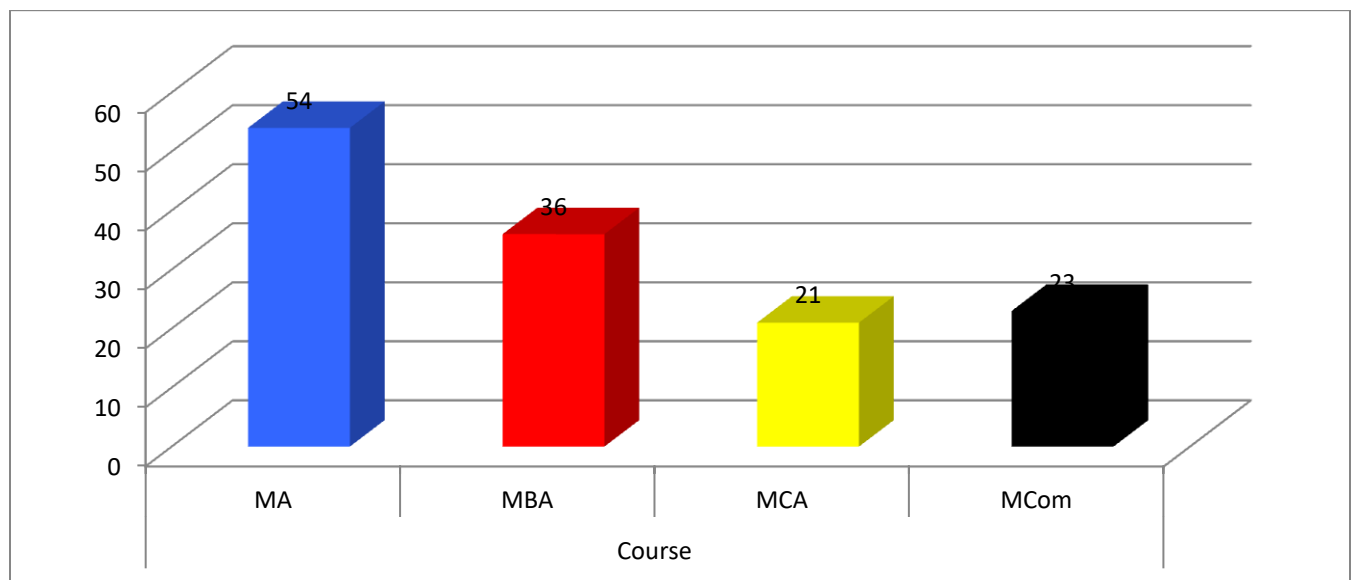


A report on  
**STUDENT SATISFACTORY SURVEY**  
2019-20

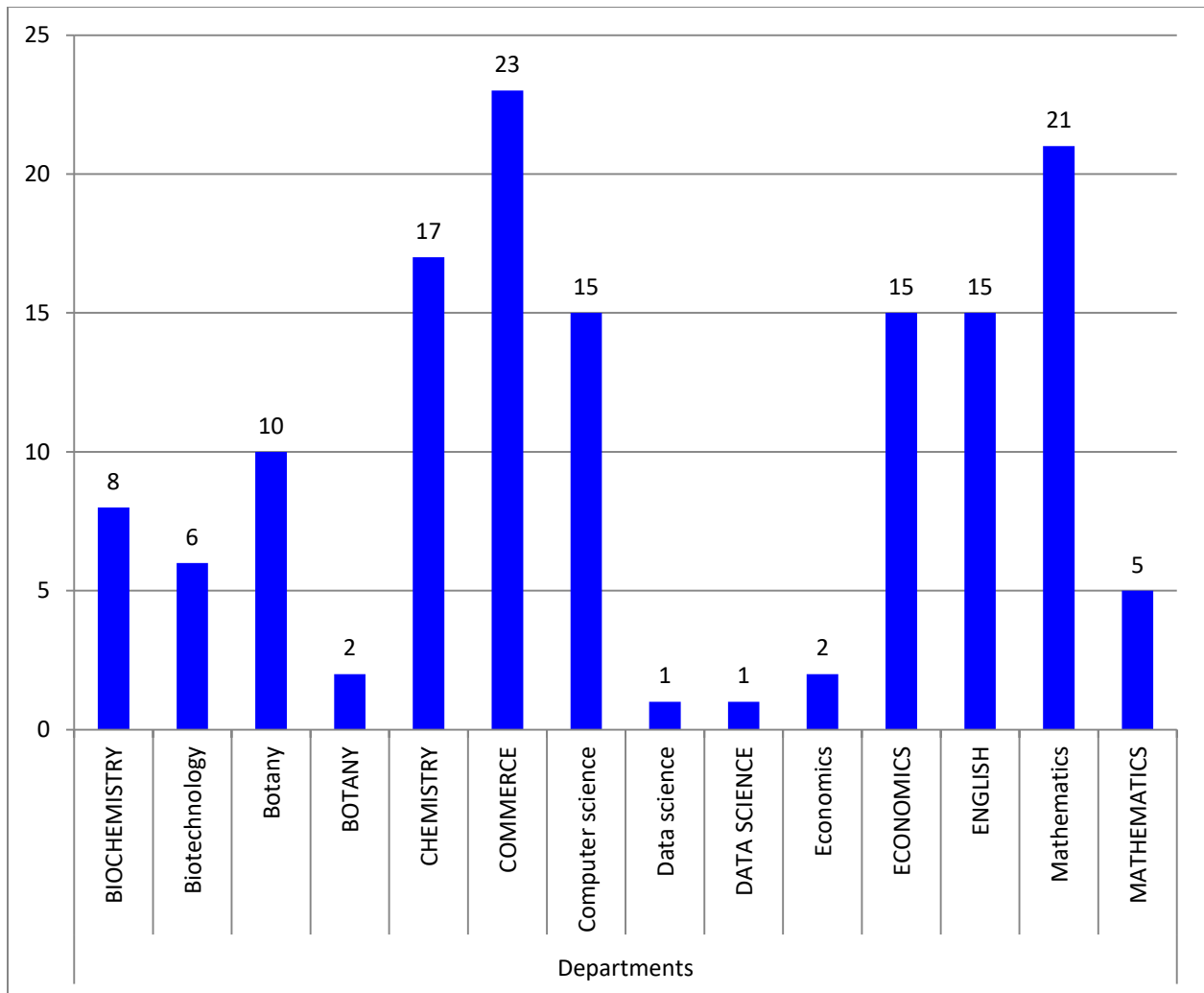
		Frequency	Percent
<b>Gender</b>	Female	156	56.7
	Male	119	43.3
	Total	275	100.0



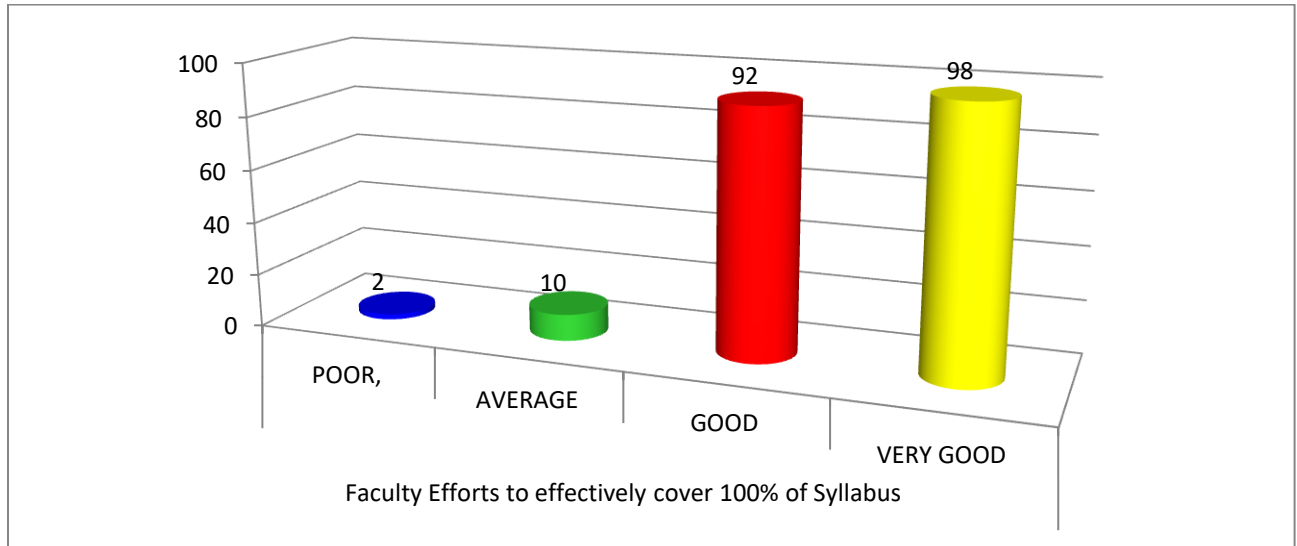
		Frequency	Percent
<b>Course</b>	MA	48	26.5
	MBA	15	8.3
	MCA	19	10.5
	MSc	99	54.7
	Total	181	100.0



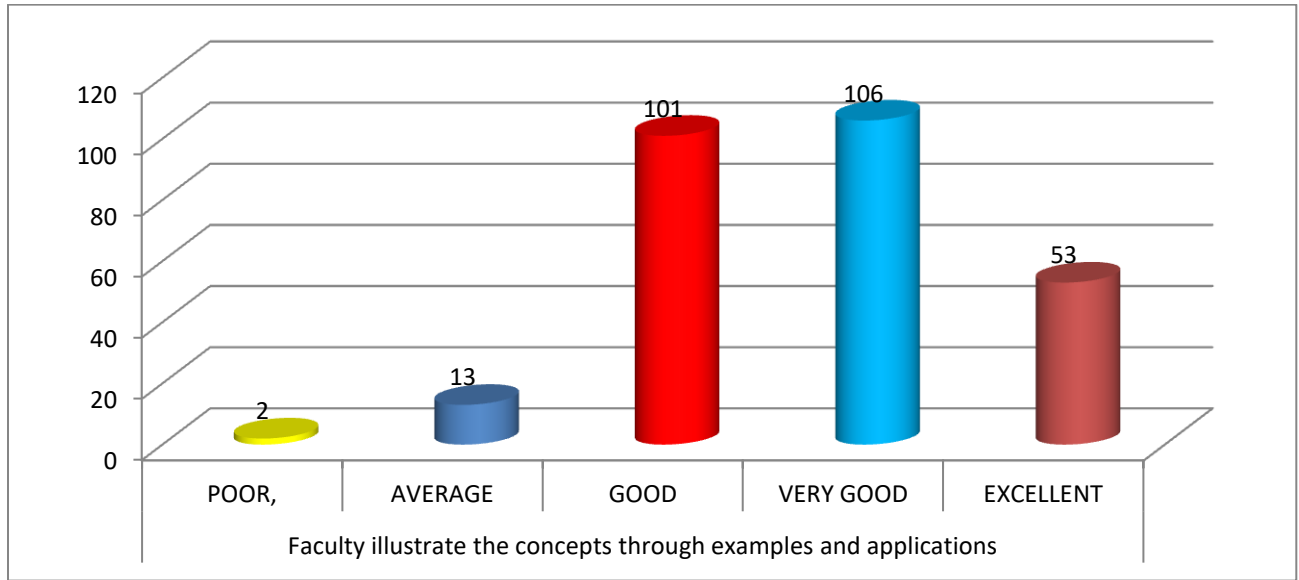
		Frequency	Percent
<b>Departments</b>	BIOCHEMISTRY	8	2.9
	Biotechnology	6	2.2
	Botany	10	3.6
	BOTANY	2	.7
	CHEMISTRY	17	6.2
	COMMERCE	23	8.4
	Computer science	15	5.5
	Data science	1	.4
	DATA SCIENCE	1	.4
	Economics	2	.7
	ECONOMICS	15	5.5
	ENGLISH	15	5.5
	Mathematics	21	7.6
	MATHEMATICS	5	1.8
	MBA	36	13.1
	MCA	21	7.6
	OR & SQC	32	11.6
	PHYSICS	14	5.1
	TELUGU	22	8.0
	Zoology	7	2.5
ZOOLOGY	2	.7	
Total	275	100.0	



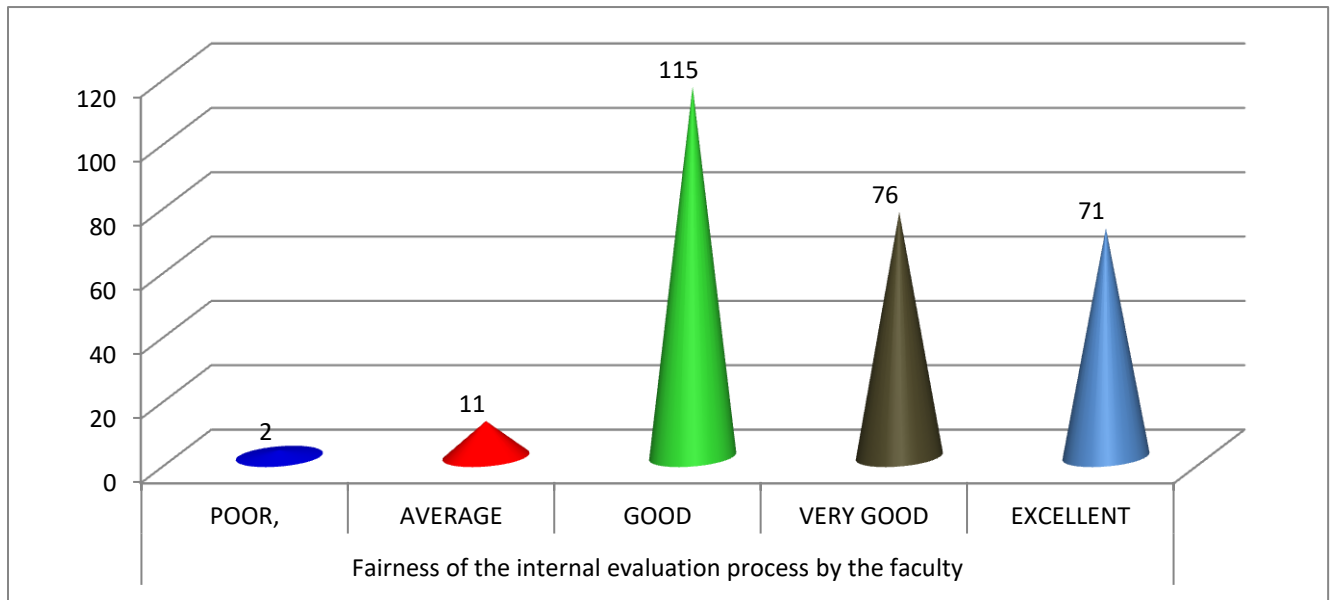
		Frequency	Percent
<b>Faculty Efforts to effectively cover 100% of Syllabus</b>	POOR,	2	.7
	AVERAGE	10	3.6
	GOOD	92	33.5
	VERY GOOD	98	35.6
	EXCELLENT	73	26.5
	Total	275	100.0



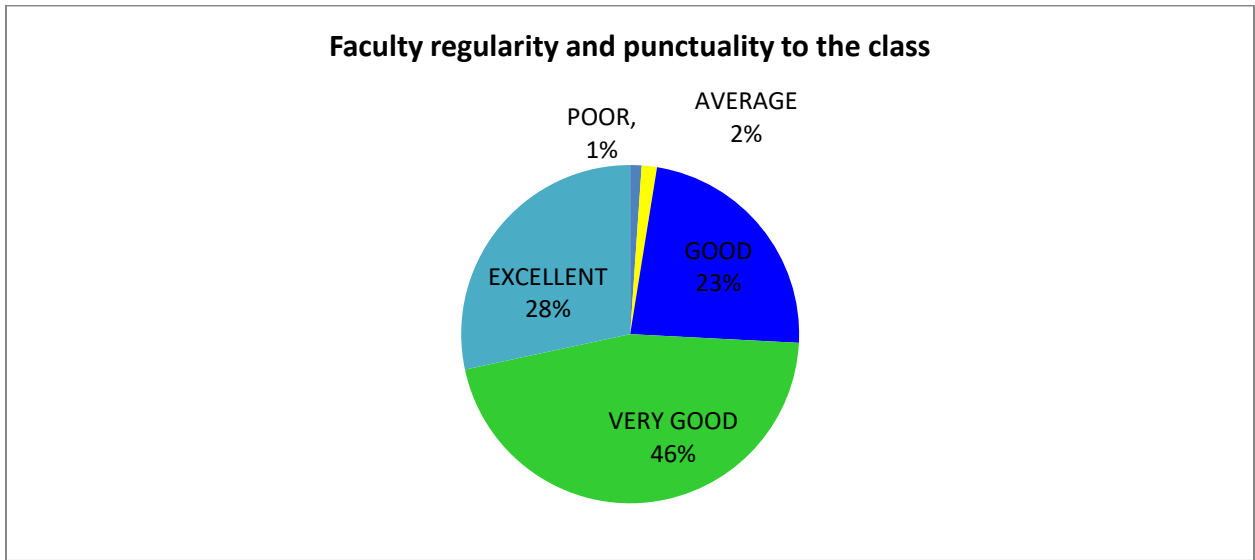
		Frequency	Percent
<b>Faculty illustrate the concepts through examples and applications</b>	POOR,	2	.7
	AVERAGE	13	4.7
	GOOD	101	36.7
	VERY GOOD	106	38.5
	EXCELLENT	53	19.3
	Total	275	100.0



		Frequency	Percent
<b>Fairness of the internal evaluation process by the faculty</b>	POOR,	2	.7
	AVERAGE	11	4.0
	GOOD	115	41.8
	VERY GOOD	76	27.6
	EXCELLENT	71	25.8
	Total	275	100.0

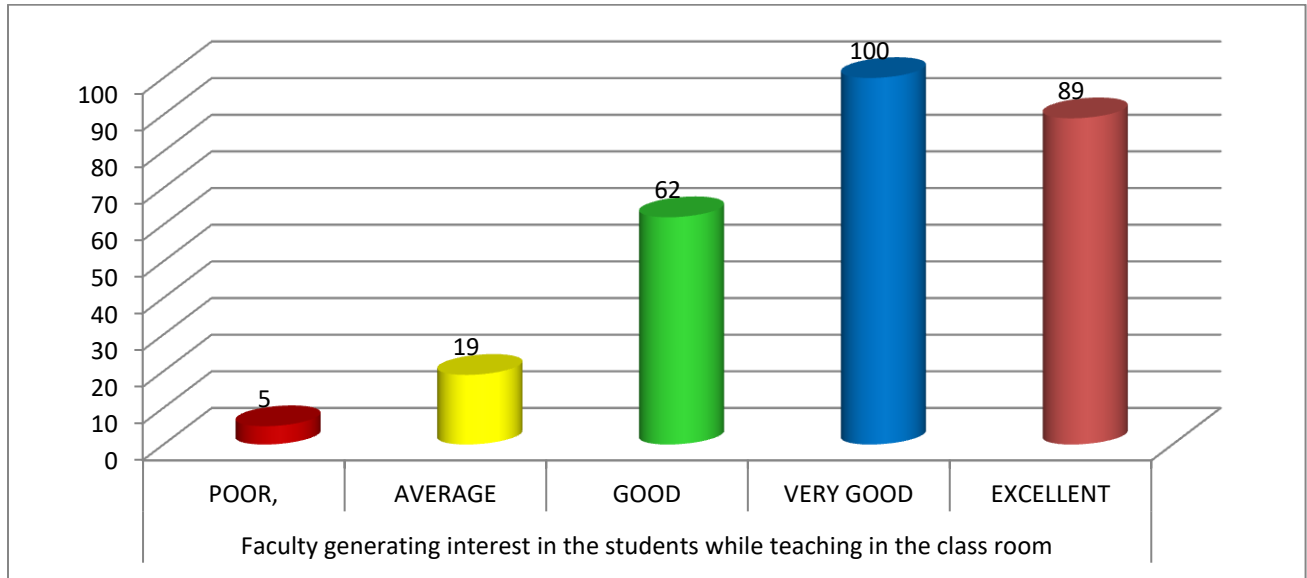


		Frequency	Percent
<b>Faculty regularity and punctuality to the class</b>	POOR,	3	1.1
	AVERAGE	4	1.5
	GOOD	64	23.3
	VERY GOOD	126	45.8
	EXCELLENT	78	28.4
	Total	275	100.0

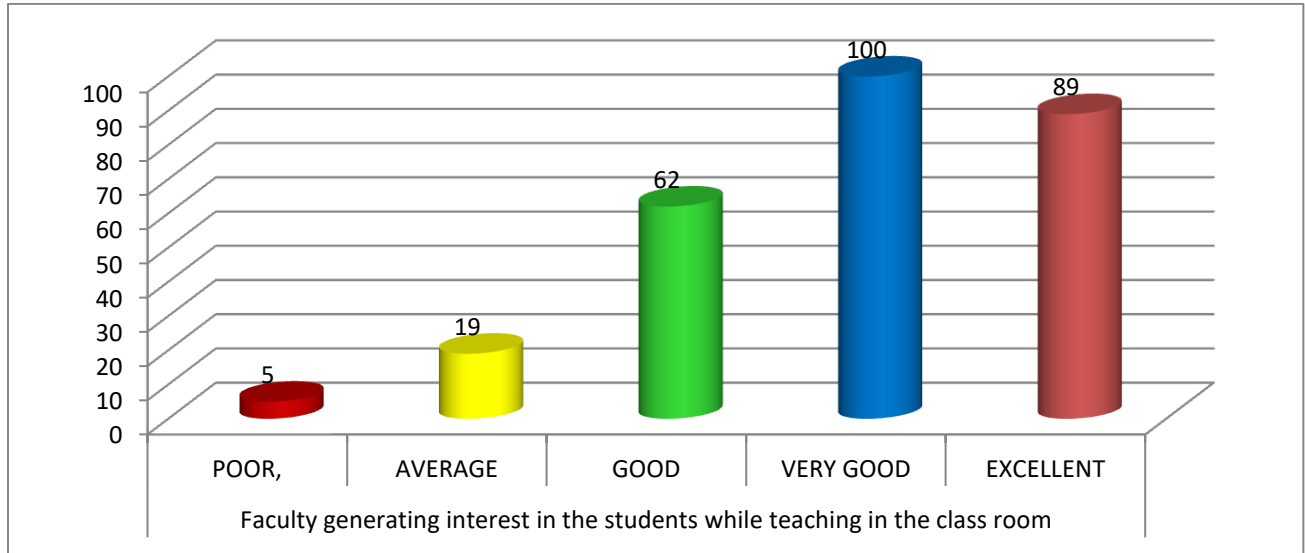




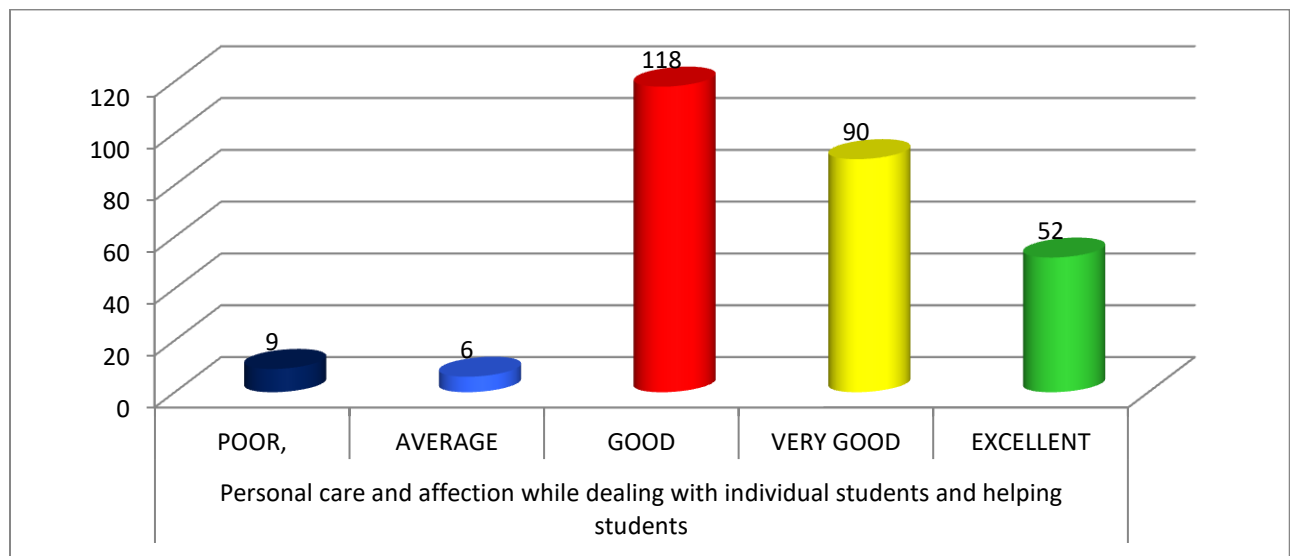
		Frequency	Percent
<b>Faculty generating interest in the students while teaching in the class room</b>	POOR,	2	.7
	AVERAGE	7	2.5
	GOOD	90	32.7
	VERY GOOD	104	37.8
	EXCELLENT	72	26.2
	Total	275	100.0



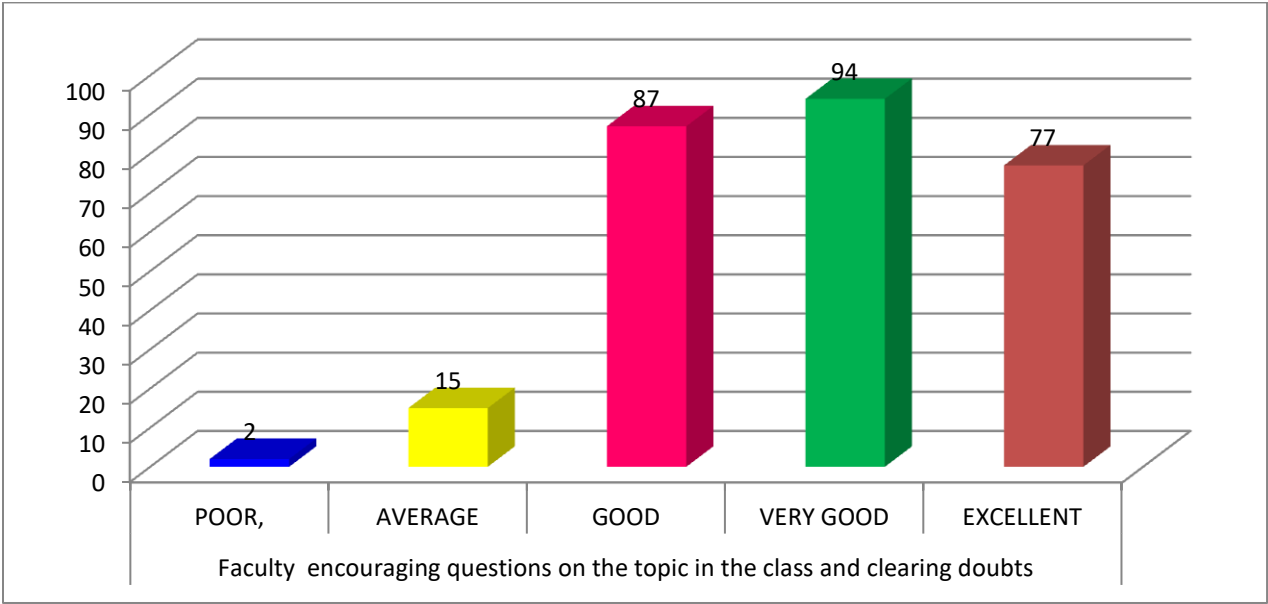
		Frequency	Percent
<b>Faculty generating interest in the students while teaching in the class room</b>	POOR,	5	1.8
	AVERAGE	19	6.9
	GOOD	62	22.5
	VERY GOOD	100	36.4
	EXCELLENT	89	32.4
	Total	275	100.0



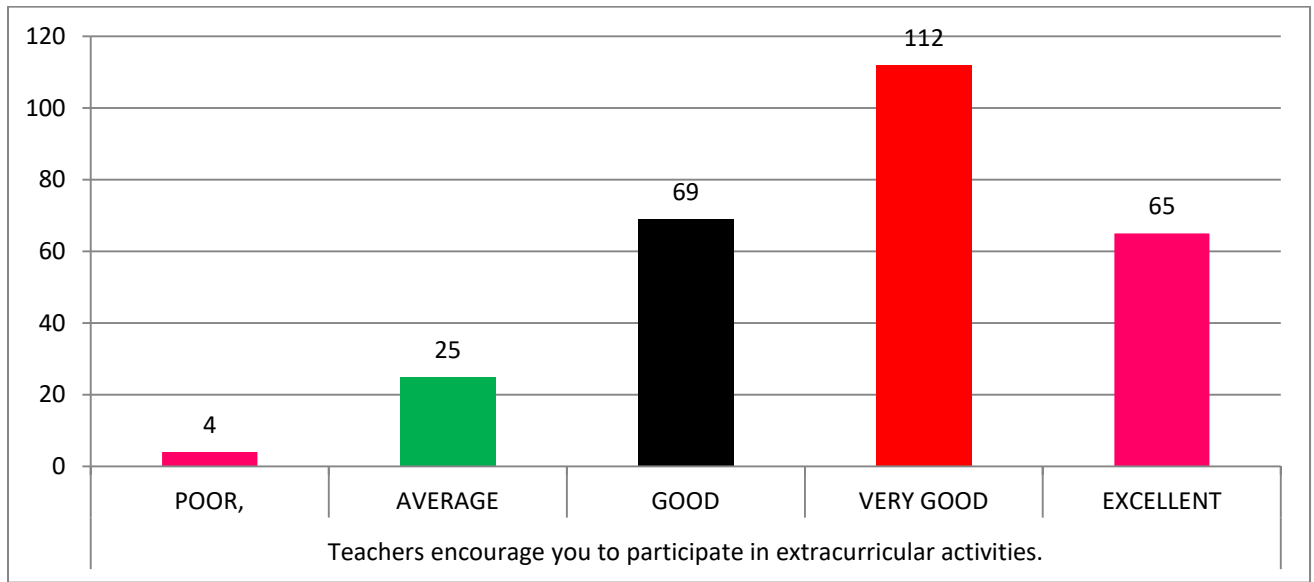
		Frequency	Percent
<b>Personal care and affection while dealing with individual students and helping students</b>	POOR,	9	3.3
	AVERAGE	6	2.2
	GOOD	118	42.9
	VERY GOOD	90	32.7
	EXCELLENT	52	18.9
	Total	275	100.0



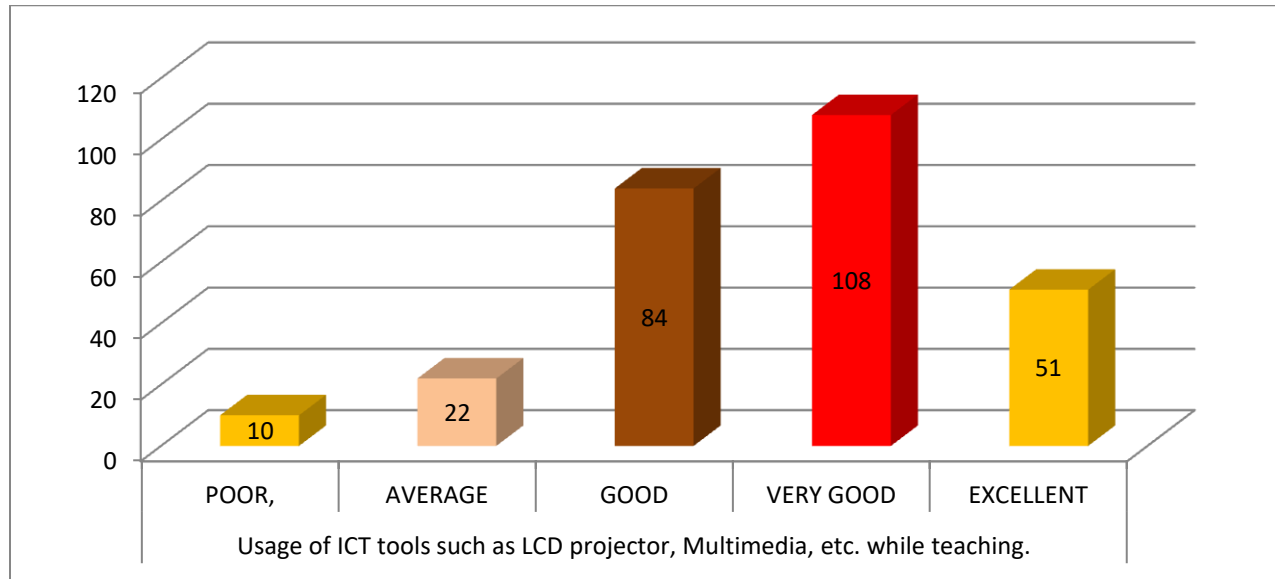
		Frequency	Percent
<b>Faculty encouraging questions on the topic in the class and clearing doubts</b>	POOR,	2	.7
	AVERAGE	15	5.5
	GOOD	87	31.6
	VERY GOOD	94	34.2
	EXCELLENT	77	28.0
	Total	275	100.0



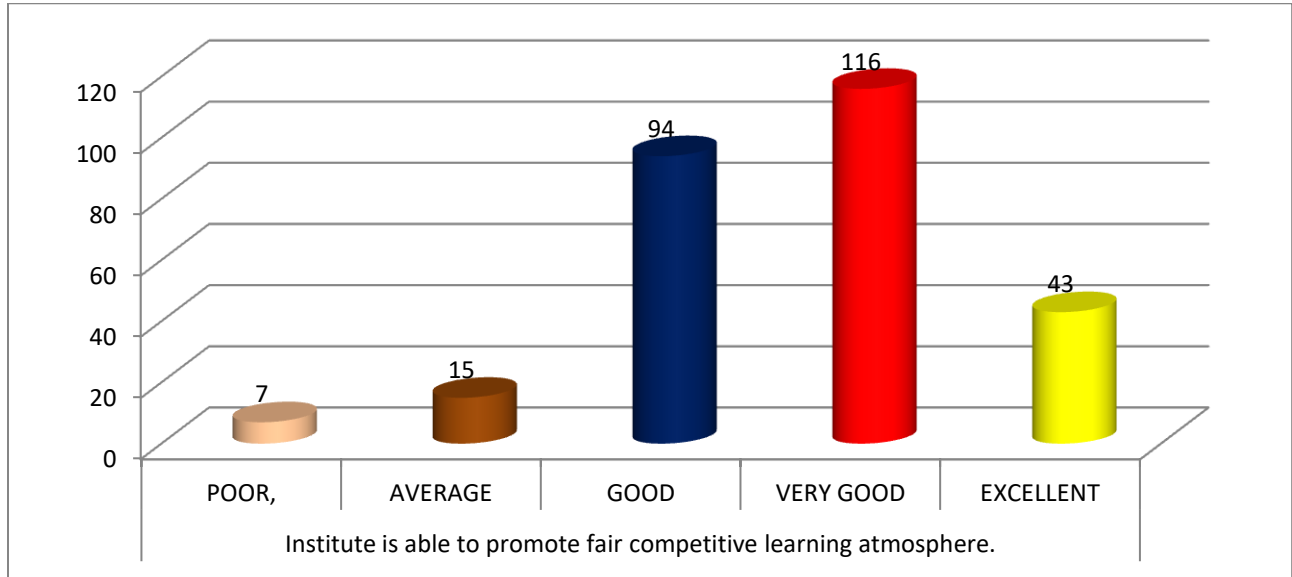
		Frequency	Percent
<b>Teachers encourage you to participate in extracurricular activities.</b>	POOR,	4	1.5
	AVERAGE	25	9.1
	GOOD	69	25.1
	VERY GOOD	112	40.7
	EXCELLENT	65	23.6
	Total	275	100.0



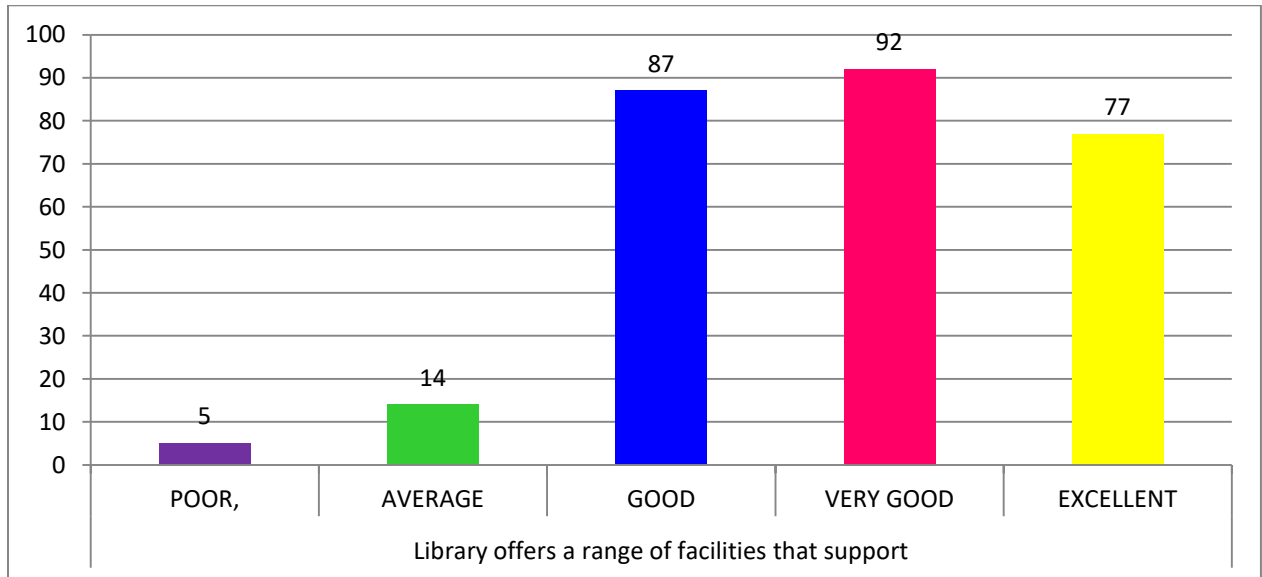
		Frequency	Percent
Usage of ICT tools such as LCD projector, Multimedia, etc. while teaching.	POOR,	10	3.6
	AVERAGE	22	8.0
	GOOD	84	30.5
	VERY GOOD	108	39.3
	EXCELLENT	51	18.5
	Total	275	100.0



		Frequency	Percent
Institute is able to promote fair competitive learning atmosphere.	POOR,	7	2.5
	AVERAGE	15	5.5
	GOOD	94	34.2
	VERY GOOD	116	42.2
	EXCELLENT	43	15.6
	Total	275	100.0

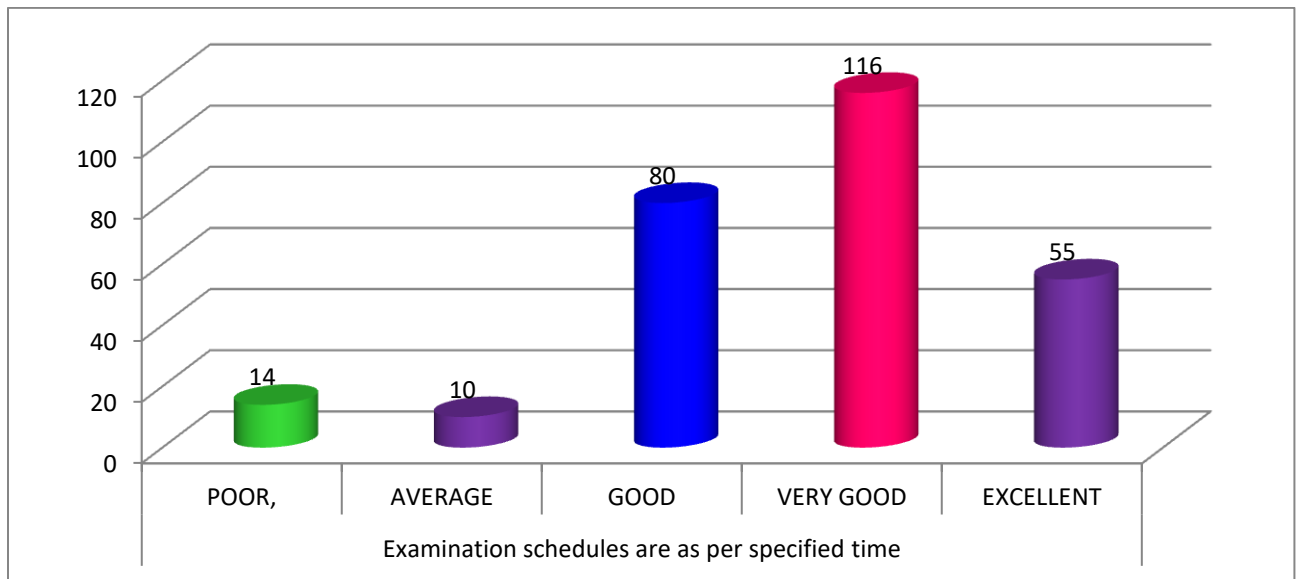


		Frequency	Percent
Library offers a range of facilities that support	POOR,	5	1.8
	AVERAGE	14	5.1
	GOOD	87	31.6
	VERY GOOD	92	33.5
	EXCELLENT	77	28.0
	Total	275	100.0

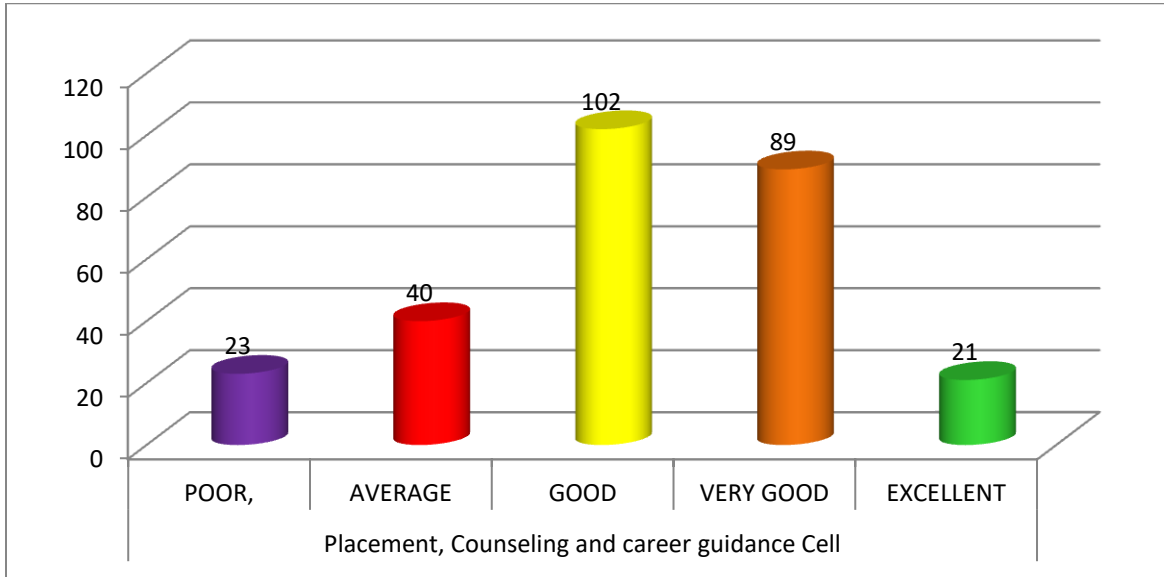




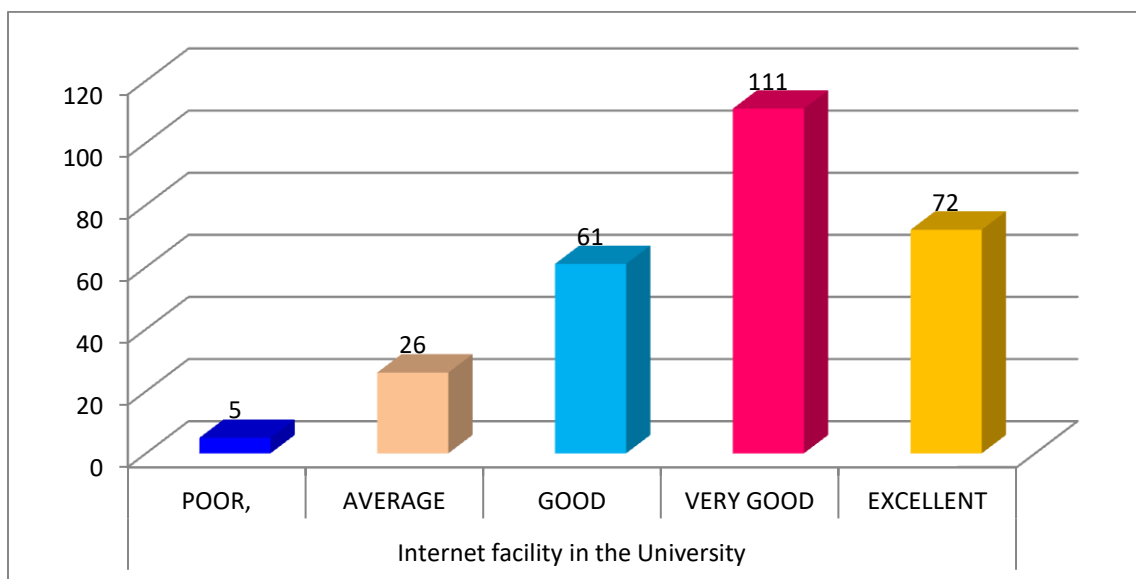
		Frequency	Percent
Examination schedules are as per specified time	POOR,	14	5.1
	AVERAGE	10	3.6
	GOOD	80	29.1
	VERY GOOD	116	42.2
	EXCELLENT	55	20.0
	Total	275	100.0



		Frequency	Percent
Placement, Counseling and career guidance Cell	POOR,	23	8.4
	AVERAGE	40	14.5
	GOOD	102	37.1
	VERY GOOD	89	32.4
	EXCELLENT	21	7.6
	Total	275	100.0



		Frequency	Percent
Internet facility in the University	POOR,	5	1.8
	AVERAGE	26	9.5
	GOOD	61	22.2
	VERY GOOD	111	40.4
	EXCELLENT	72	26.2
	Total	275	100.0



		Frequency	Percent
Overall opinion on the University	POOR,	5	1.8
	AVERAGE	17	6.2
	GOOD	85	30.9
	VERY GOOD	112	40.7
	EXCELLENT	56	20.4
	Total	275	100.0

